

Ceiling LED Pendant

MP52106

INSTALLATION SHEET

START FROM HERE

- Make sure power is completely off at the fuse box.
- Have your fixture installed by a qualified licensed electrician
- Prepare everything in a clear area.
- Wear gloves at all times during this installation.
- Read instructions carefully before you start assembly.
- Keep this instruction sheet for future reference.

Technical Support: 1-877-452-6858

Please Note:

- All Kuzco LED fixtures come with pre-wired LED module(s).
- Unless instructed to do so, please do not touch any part of the LED module(s) as any unnecessary contact with the module could cause permanent damage.
- For dimming, an ELV (Electronic Low Voltage) type of dimmer is required.

CAUTION: CAUTION: HEAVY FIXTURE, THE JUNCTION BOX NEEDS TO BE REINFORCED BEFORE INSTALLATION. ALL MOUNTING SCREWS MUST SCREW INTO A MINIMUM OF 1" OF WOOD BEHIND THE DRYWALL. DO NOT MOUNT THIS FIXTURE JUST TO DRYWALL. (Be sure all wood that you screwed into, is secured to the cross beams/ceiling joists behind the drywall)

1. Remove the fixture from it's original packaging. Remove the canopy mounting plate (1c) from within the canopy (2a) by removing the two decorative nuts (2f). Now install the two screws (2c) provided to secure the mounting plate to the junction box (1a). Secure the mounting plate (1c) to the ceiling with two screws (2b), make sure to reinforce the wood behind the drywall.

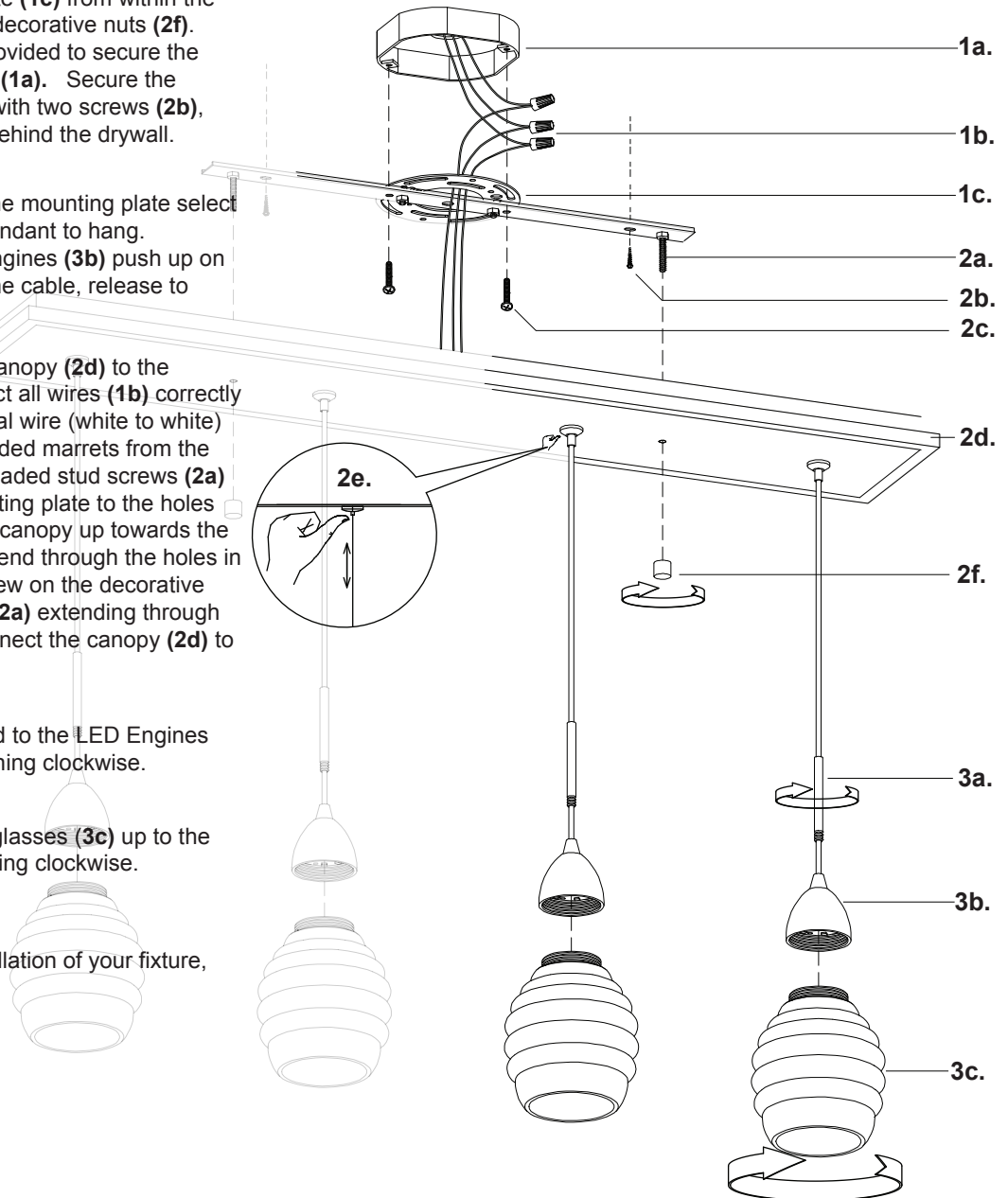
2. Before you mount the canopy to the mounting plate select the desired length you wish the pendant to hang. To shorten or lengthen the LED engines (3b) push up on the canopy nipples (2e) and pull the cable, release to secure.

3. You are now ready to mount the canopy (2d) to the mounting plate (1c). First connect all wires (1b) correctly L live wire (black to black) N neutral wire (white to white) and G ground to ground with provided marrets from the hardware package. Align the threaded stud screws (2a) hanging downward from the mounting plate to the holes inside the canopy (2c). Push the canopy up towards the ceiling so the stud screws (2a) extend through the holes in the canopy (2d). You can now screw in the decorative nuts (2f) onto the threaded studs (2a) extending through the canopy. This will securely connect the canopy (2d) to the mounting plate (1c).

4. If the stems (3a) are not connected to the LED Engines (3b) do so by threading this on, tuning clockwise.

5. LED Engine is built in. Push the glasses (3c) up to the LED engines (3b) and thread, turning clockwise.

6. You have now completed the installation of your fixture, enjoy.



KUZCO LIGHTING

19054 28th Avenue Surrey, BC Canada V3S 6M3
T: 604 538 7162 TF: 1-855 85 KUZCO F: 604 538 7196
W: kuzcolighting.com
20160704